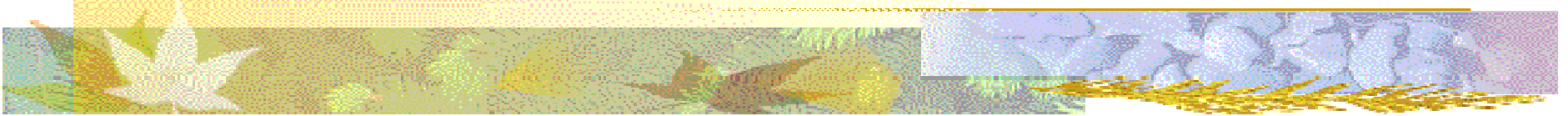


Labour Issues: The Use of Temporary Foreign Workers in Western Canada



Rural Matters!

Presented by: Robert Annis, PhD, Director,
Rural Development Institute, Brandon University

July 6, 2008



Workshop Outline

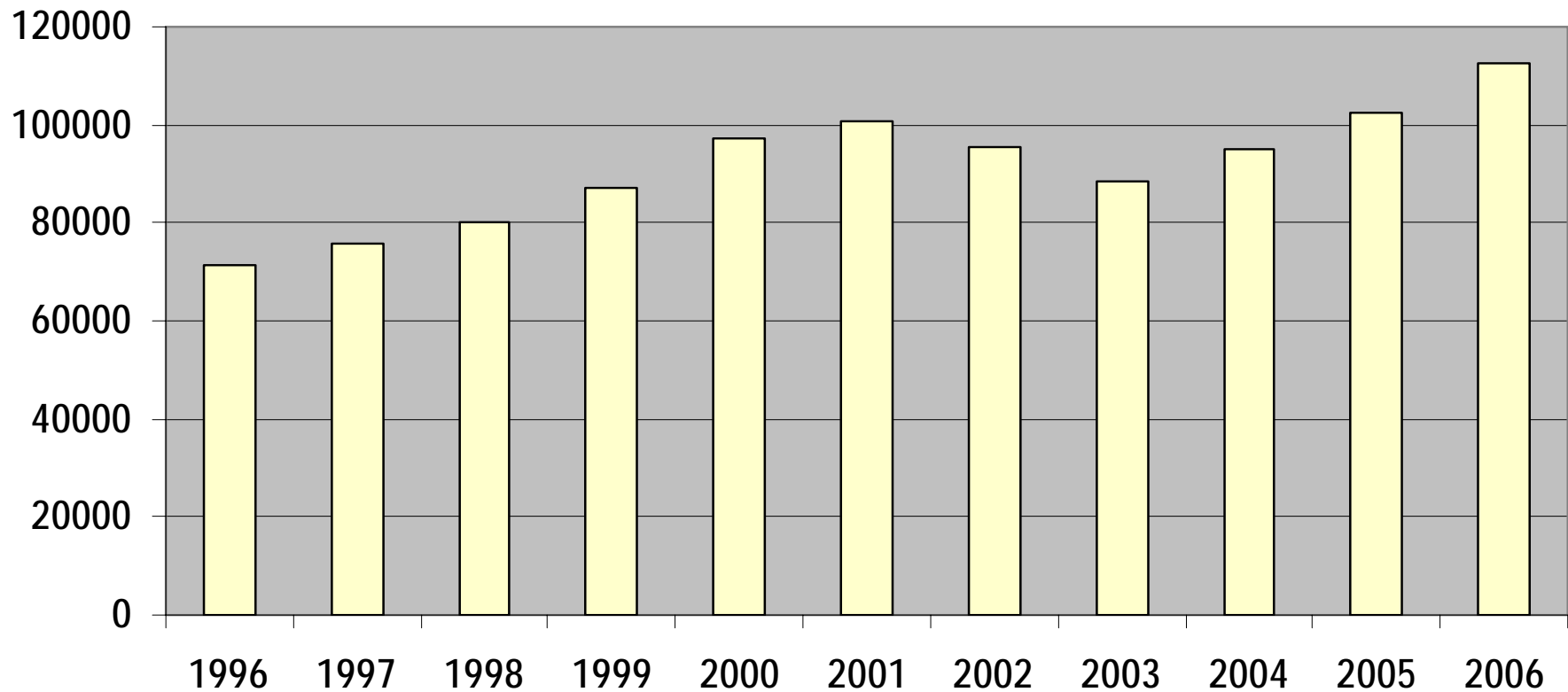
- **Context**
 - **Collaborative Research**
 - **Maple Leaf Foods Recruitment, Settlement, Integration and Future Residency of Temporary Foreign Workers (TFWs)**
 - **Brandon's Changing Cultural Landscape**
 - **Provincial Government – Manitoba**
 - **Provincial Government – Alberta**
 - **Moderated Panel – Question and Answer**
-

Temporary Foreign Worker Program

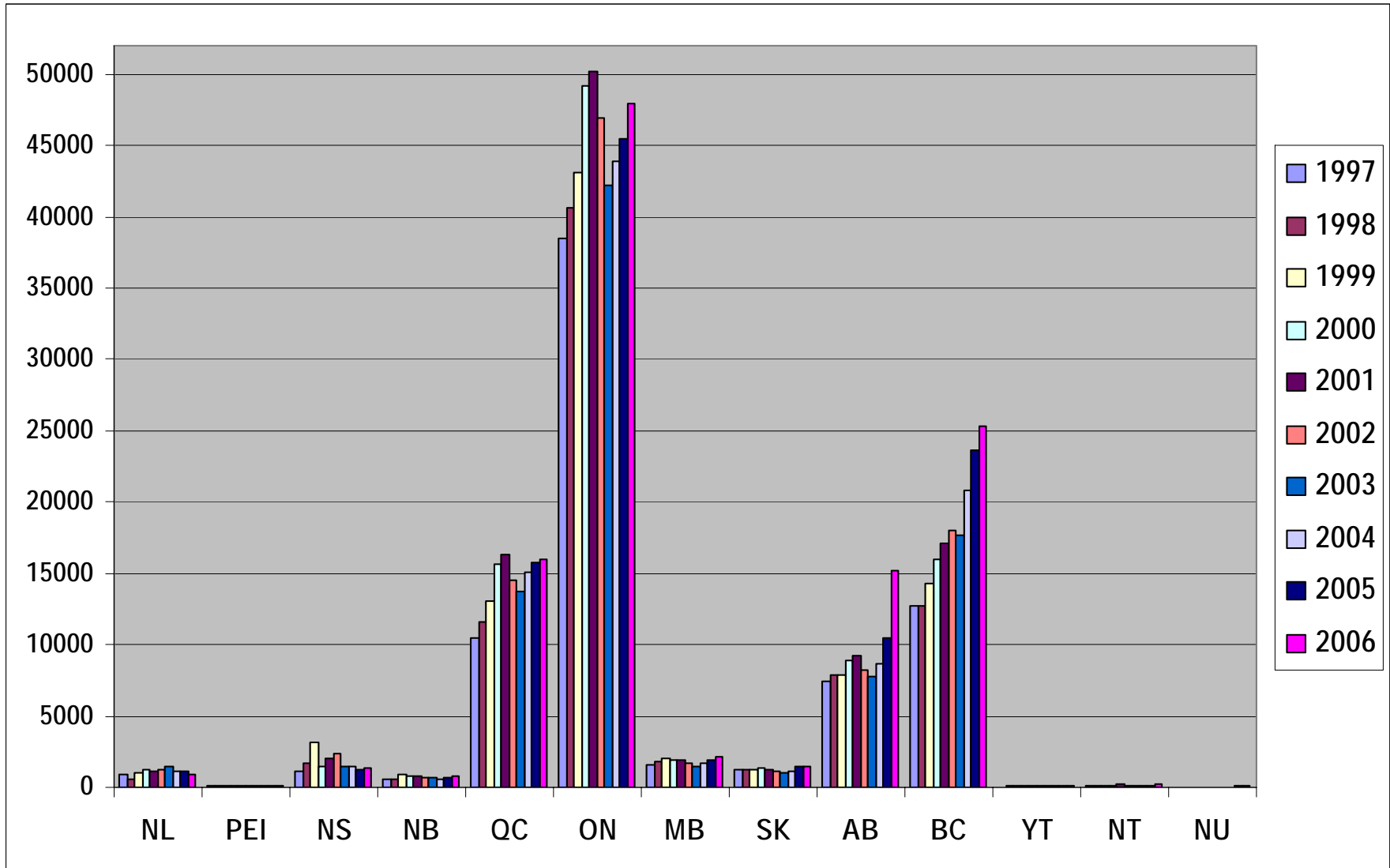
- Employer-driven demand for labour
- Federally regulated pilot program for low-skilled labour
- Work permits issued for a maximum of two years
- Province of Manitoba promotes TFWs becoming Provincial Nominees

Temporary Foreign Workers in Canada

Annual Flow of TFWs in Canada



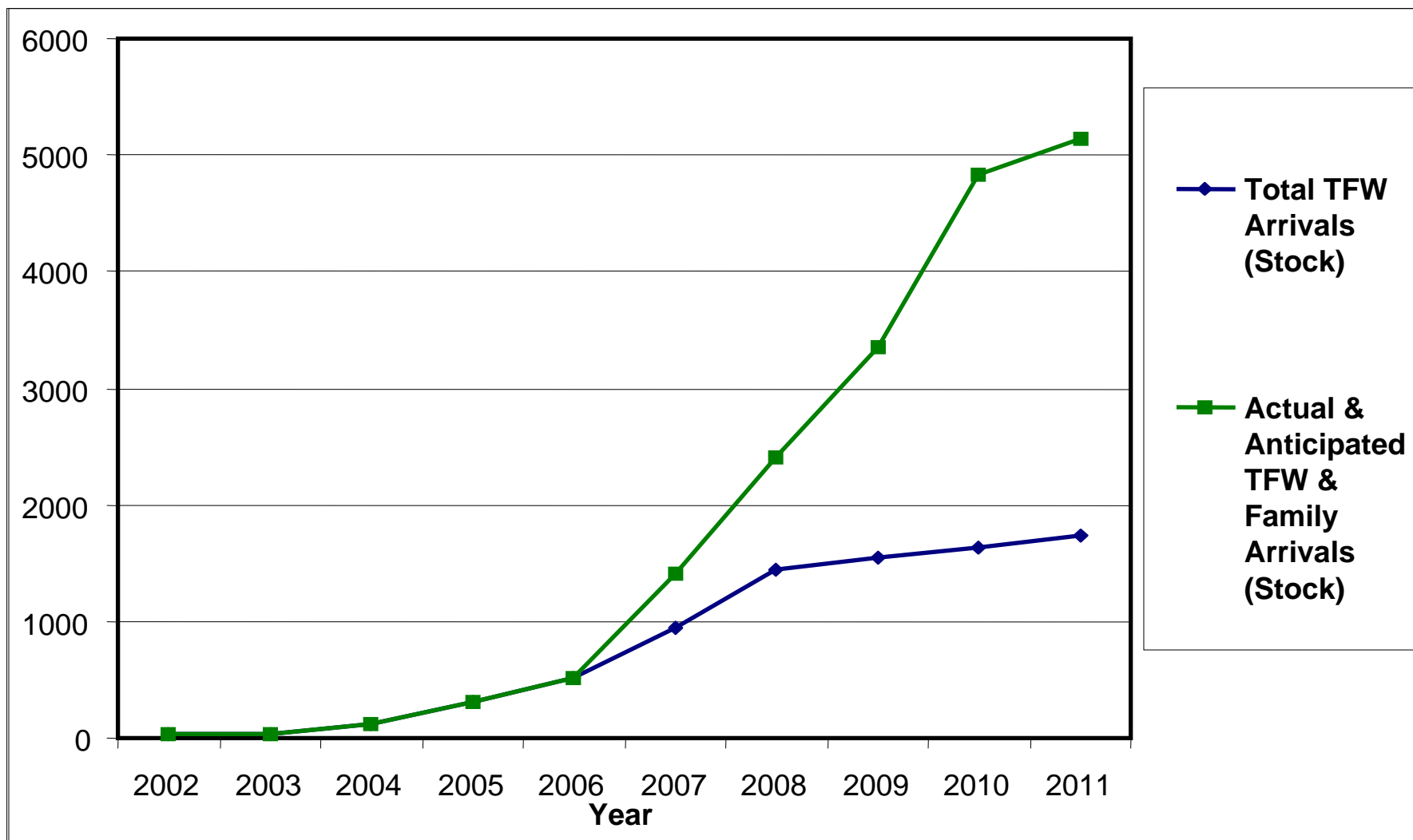
Annual Flow of TFWs, by Province



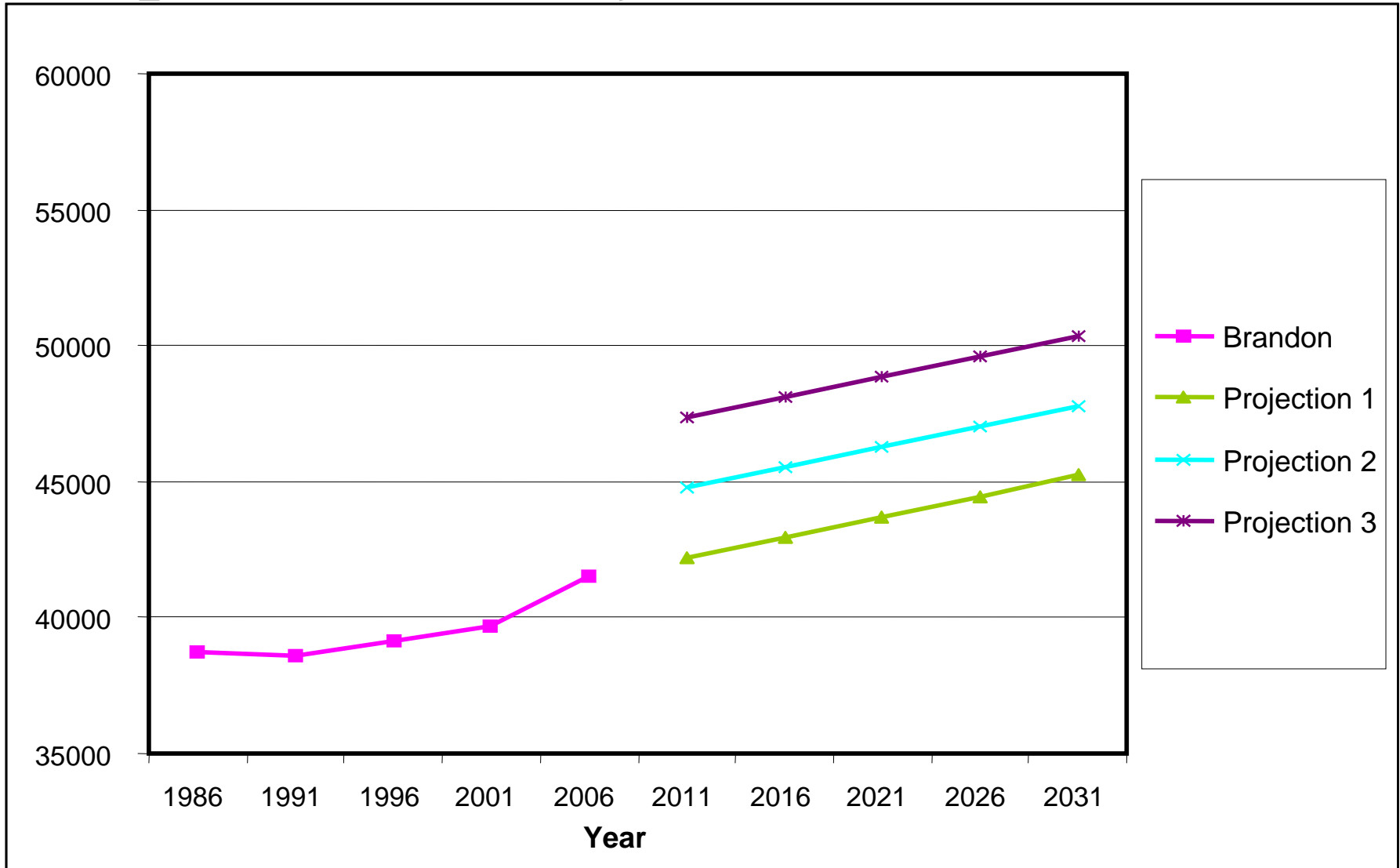
The Case of TFWs in Brandon, Manitoba

- **Strategy to address labour and skill shortages**
- **Maple Leaf Foods began international recruitment in 2002**
- **Family reunification is increasing the number of newcomers to the community**
- **Rapid demographic change impacts and challenges rural municipal governments and service providers**

Estimated TFW & Family Arrivals



Population Projections



For more information

- Rural Development Institute (RDI),
Brandon University -
<http://www.brandonu.ca/organizations/rdi/tfw.asp>
- Robert Annis, PhD,
Director, RDI
(204) 571-8513
annis@brandonu.ca