



# Rural Youth Migration

Rural Development Institute  
Advisory Committee Meeting

January 14, 2008



# Project Origins

- Rural Team Manitoba Youth Committee research initiative
- Funding partners: Manitoba Aboriginal and Northern Affairs; Manitoba Education, Citizenship & Youth; Canada Rural Secretariat
- Research partners: le Conseil de développement économique des municipalités bilingues du Manitoba (CDEM); Rural Development Institute



# Research Goal

To develop a deeper understanding about rural youth migration in Manitoba.



# Research Objectives

Three research objectives:

1. Investigate the extent of youth migration to and from rural communities;
2. Explore reasons for youth migration; and
3. Provide data to assist communities, regions, government departments and others to identify opportunities to retain youth in Manitoba and to attract youth back to rural communities.

- A project steering committee ensures a collaborative approach to assist in research design and implementation
- Case study approach encompassing multiple methods
  - Secondary data analysis
  - Literature review
  - Policy review
  - Semi-structured interviews
  - Focus groups
  - Participant observation
  - Content analysis
- 2 phase project



# Project Activities To Date

- Interest expressed fall 2007
- Call for graduate student research assistants November 2007
- Contribution agreements and MOUs December 2007
- 2 graduate students engaged December 2007
- Literature review and secondary data analysis underway
- Interview and focus group guides/question development underway
- Project planning (community partners; support staff and translation)
- Ethics submission and approval



# Study Sites

## 3 Manitoba Regions

- Francophone communities
  - Notre Dame; Ste. Anne; St. Laurent
- Parkland
  - TBD
- North
  - TBD



# Phase 1: December 1, 2007 – March 31, 2008

## *Work Plan*

### *January 2008*

- Literature review and secondary data analysis
- Question development
- Translation (fact sheet, consent form, oath of confidentiality, interview and focus group guides)

### *February 2008*

- Week 1 & 2: Interviews and focus group in CDEM communities
- Week 3: Data translation
- Week 4: Data analysis

### *March 2008*

- Week 1: Data analysis completion
- Week 2 & 3: Report writing
- Week 4: Year 1 Report submission to Rural Secretariat and the Youth Standing Committee





## Phase 2: April 1, 2008 – December 31, 2008

### *Work Plan*

#### *April 2008*

- Data collection
  - North

#### *May 2008*

- Data collection
  - Parkland

#### *Summer 2008*

- Data analysis

#### *Fall 2008*

- Reporting/writing
- Knowledge translation and transfer

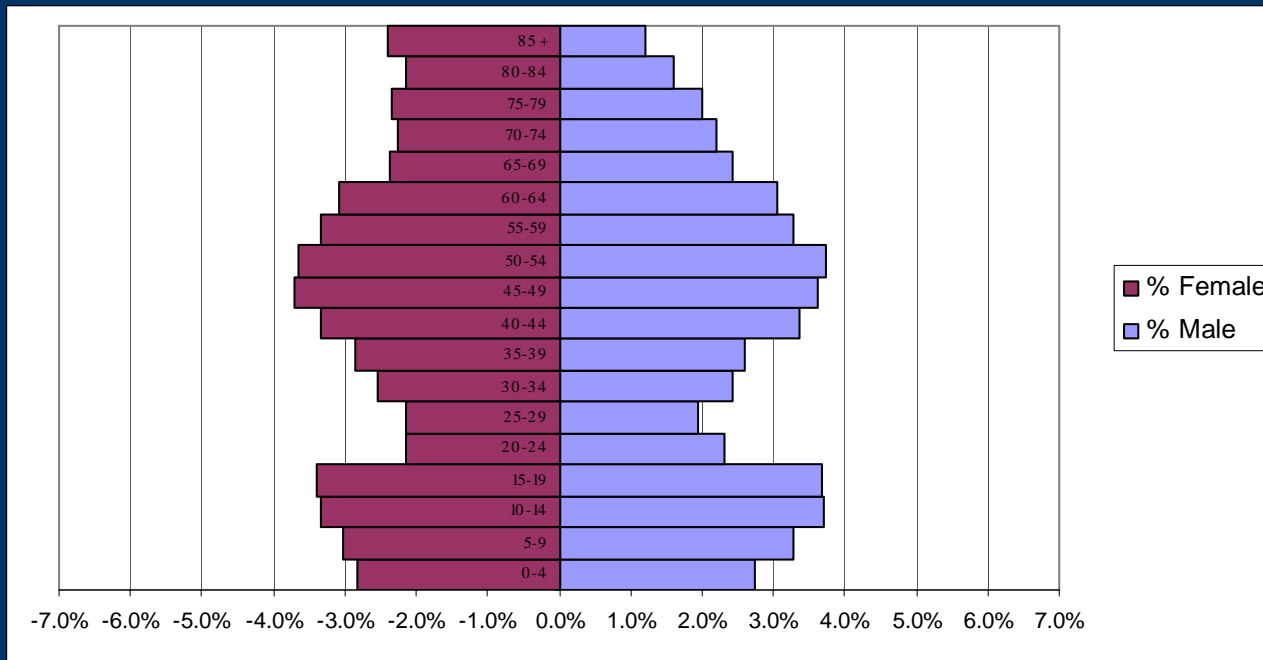


## Secondary Data

- Population Pyramids
  - Illustrating rural youth migration between 1971 and 1996 in Manitoba



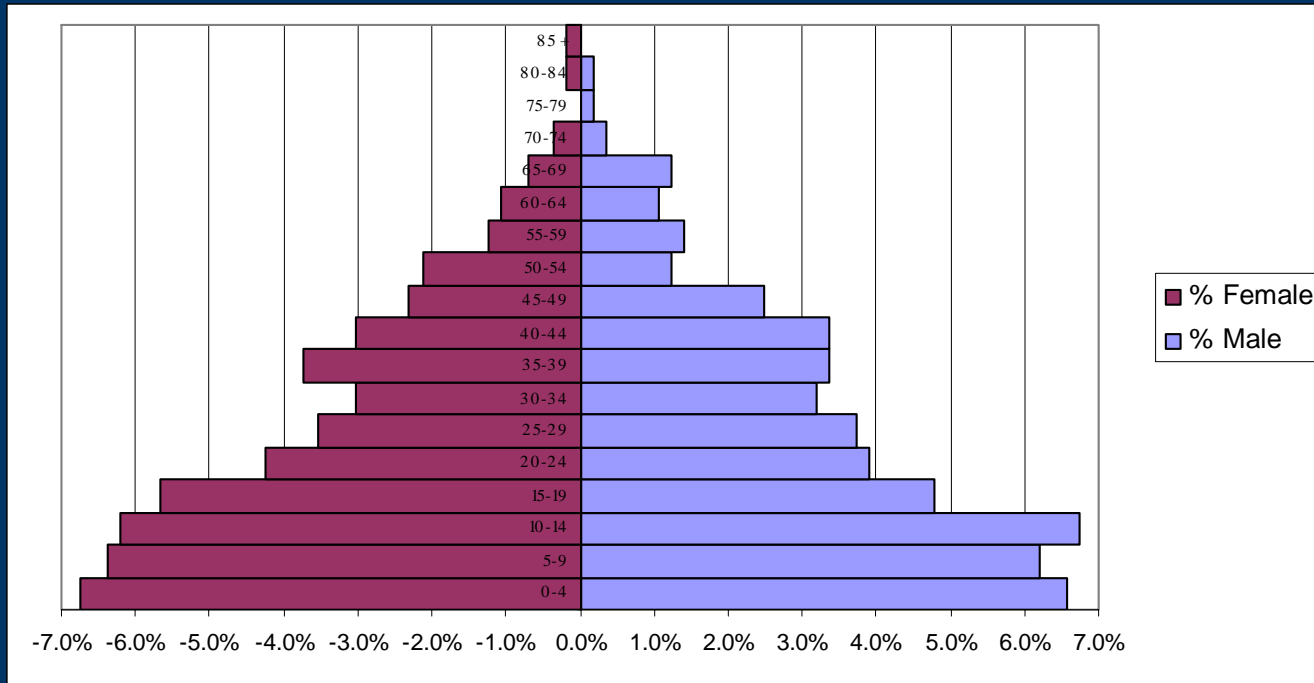
# Parkland 2006



Benito; Binscarth; Bowsman; Dauphin; Ethelbert; Gilbert Plains;  
Grandview; Minitonas; Roblin; Rossburn; Russell; Ste. Rose du  
Lac; Swan River; Winnipegosis



# Parkland First Nations 2006



Gambler; Valley River; Waywayseecappo;  
Ebb and Flow



# Question & Themes (Literature)

## Background

- Age
- Gender
- Education Level

## Opinions and Attitudes

- Employment Opportunities
- Education and Training Opportunities
- Recreation and Social Activities

## Knowledge

- Ability of levels of Government to Address Rural
- Issues Pertaining to Youth

## Behaviour

- Family Ties
- Community Connection



# Question Development

Our challenge!

- Create questions that move the general to the specific
- Create questions that reveal knowledge about the big picture
- Create questions that generate information that is useful to all partners and collaborators



# Contacts

Alison Moss

Research Affiliate, RDI

(204) 571-8553

[Mossa@brandonu.ca](mailto:Mossa@brandonu.ca)

[www.brandonu.ca/rdi](http://www.brandonu.ca/rdi)