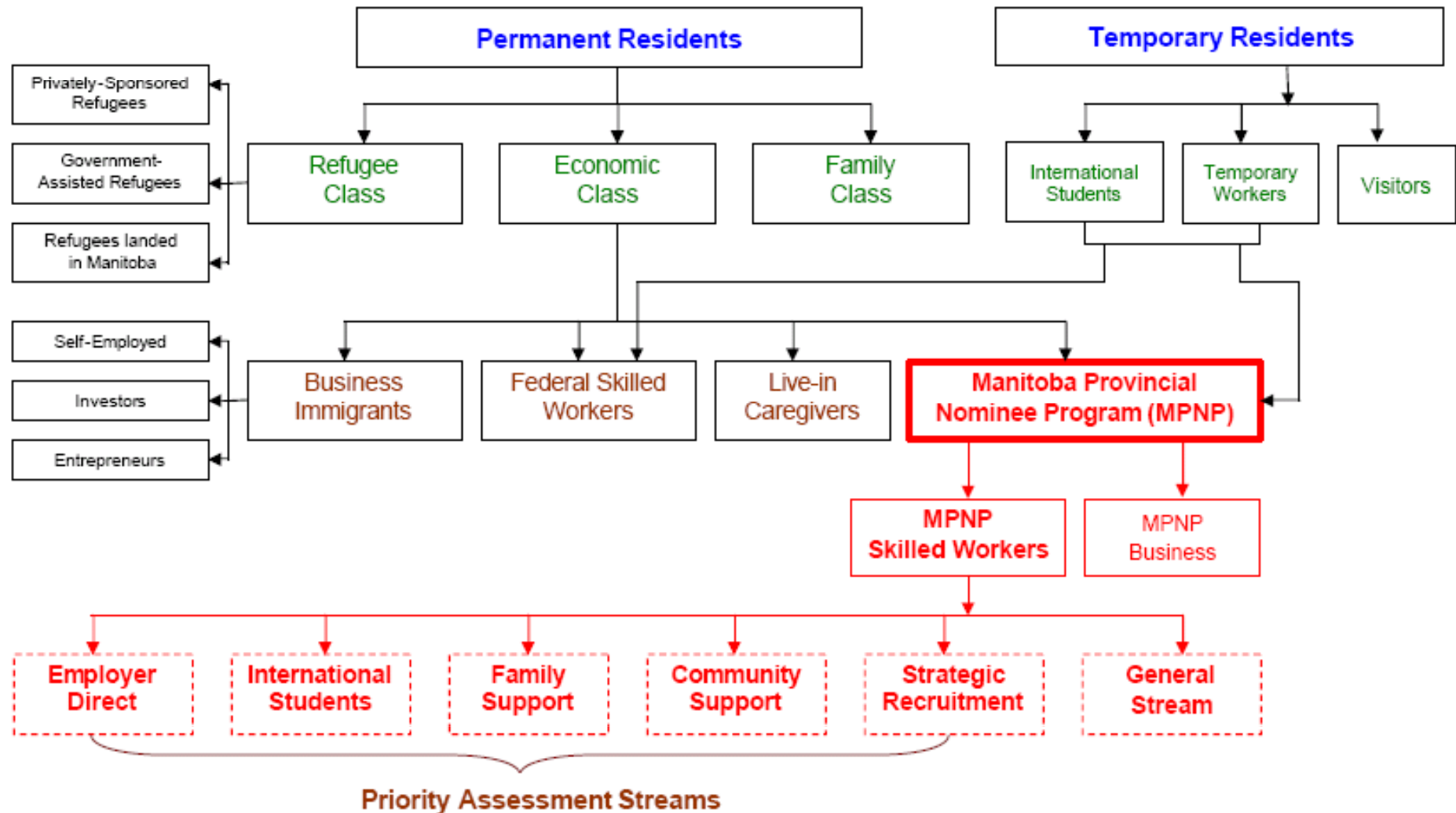


# Brandon's Evolving Cultural Landscape



# How Immigrants come to Brandon

## How Immigrants Come to Manitoba



# Foreign Worker Timelines

**YTD – 1,500 foreign workers brought to work at the Brandon Maple Leaf Consumer Foods facility, 90% retention rate**

**Skilled workers brought in to work at both public and private companies.**

1. Foreign worker arrives in Brandon, with a work visa.
2. After 6 months, eligible to apply to Manitoba Provincial Nominee Program (MPNP). MPNP application processed within 3-4 months
3. Upon receipt of positive decision from MPNP, worker files an application for permanent residence to CDN visa office (includes spouse and children).
4. Permanent residence application processed on average within 12 months. Upon approval, whole family is issued permanent resident visas (entitled to go live and work anywhere in Canada).

# Historical Population

Year	Population	Change in Population	% Change in Population
1986	38,708	2,365	6.50%
1992	38,567	-141	- 0.40%
1996	39,175	608	1.60%
2001	39,716	541	1.40%
2006	41,511	1,795	4.50%



During the last census, Brandon's population increased 3 times more than the previous census, fueled by immigration.

# Historical Immigration Numbers

## Immigration to Brandon by applicant status and landing year

	1995	1996	1997	1998	1999	2000	2001	2002	2003	2004	2005	2006	2007	2008*
Principal Applicant	39	46	35	28	24	27	28	26	44	71	79	80	296	
Dependent	28	51	43	16	37	22	41	27	33	59	102	92	346	
Total	67	97	78	44	61	49	69	53	77	130	181	172	642	664

\*Source: Citizenship and Immigration Canada unofficial data

### Note:

- Does not reflect individuals in Brandon on a work visa
- Does not reflect immigrants who were destined for elsewhere

# Changing Demographics



2001 Census - 2.5% of the population identified as a visible minority.



2006 Census - 4% of population identified as a visible minority.



If projections are realized, visible minorities could increase to approximately 10% by 2011.



Aboriginal population as a % of the total population has remained constant the past decade, at ~10% of population.

# Projected Arrival of family members of International Workers employed at Maple Leaf



**3,257** family members arriving between June 2007 and Mar 2011

*~ 2,500 will have arrived by Jan 2010 from 4 language groups*

		By Jun 2007	By Jan 2008	By Jun 2008	By Jan 2009	By Jun 2009	By Jan 2010	By Jun 2010	By Jan 2011	By Mar 2011	
<b>Dependant Arrivals</b>											
Spouses		1140	149	74	104	36	251	260	192	13	62
<b>Male</b>		324	134	34	18	6	43	44	33	2	10
<b>Female</b>		816	15	39	86	30	208	216	159	11	51
<b>Children Total</b>		2117	317	112	207	71	356	521	384	27	123
6 month summary	0 to 2 years old	269	38	28	25	9	43	62	46	3	15
	3 to 5 years old	328	60	15	31	11	53	78	58	4	18
	6 to 9 years old	303	55	29	27	9	46	68	50	3	16
	10 to 12 years old	367	121	27	27	9	46	68	50	3	16
	<b>Children Requiring Care</b>	1268	274	99	110	38	188	276	203	14	65
13 to 17 years old		456	0	0	56	19	96	141	104	7	33
18 to 22 years old		298	33	12	31	11	53	78	58	4	18
Young adults		95	10	1	10	4	18	26	19	1	6
<b>School Age Children</b>		1225	194	61	119	41	204	299	221	15	71

- Dependent information is projected using data from current MLF foreign workers.
- Country of origin demographic statistics were also considered.



Sandy Trudel  
Economic Development Officer  
City of Brandon  
729-2131  
s.trudel@brandon.ca  
www.econdev.brandon.ca

[www.econdev.brandon.ca](http://www.econdev.brandon.ca)